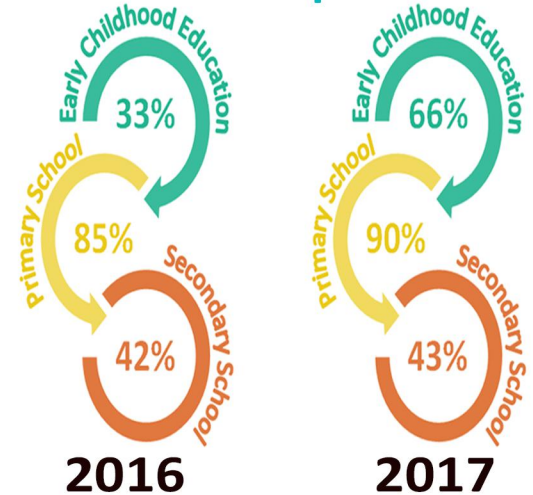
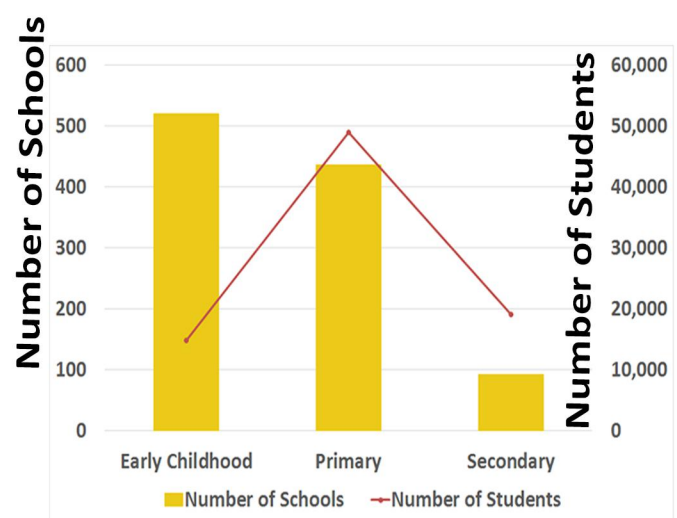




# Education Key Indicators

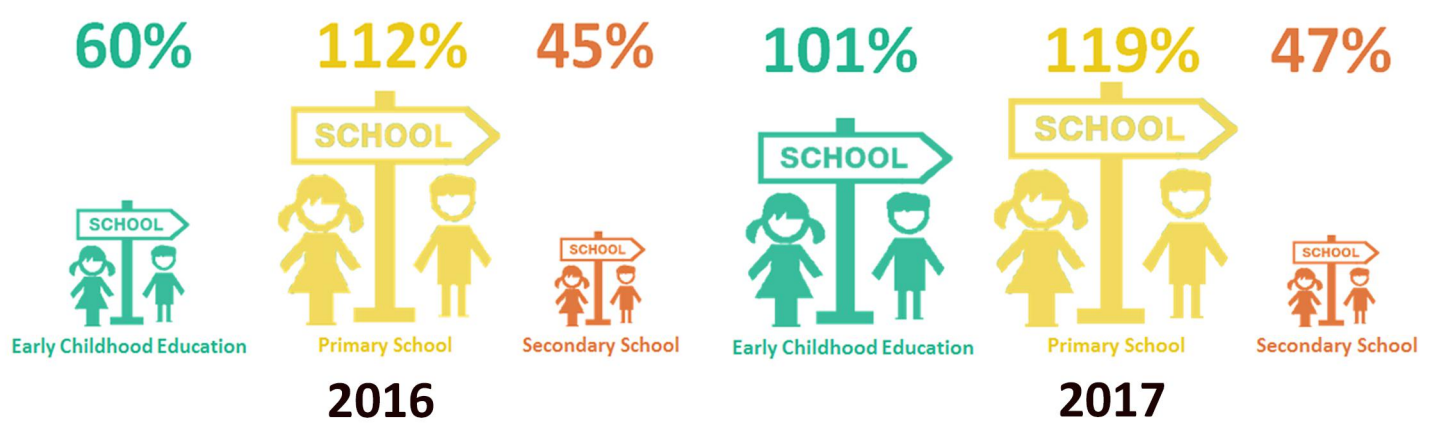
The Ministry of Education and Training has been working along with schools and provinces to improve the **quality of the data available**. The data collected in 2016 were incomplete and might limit the comparison between 2016 and 2017. Data applies to private and government schools.

## Schools and Students in 2017 Net Enrolment Rate per School Type



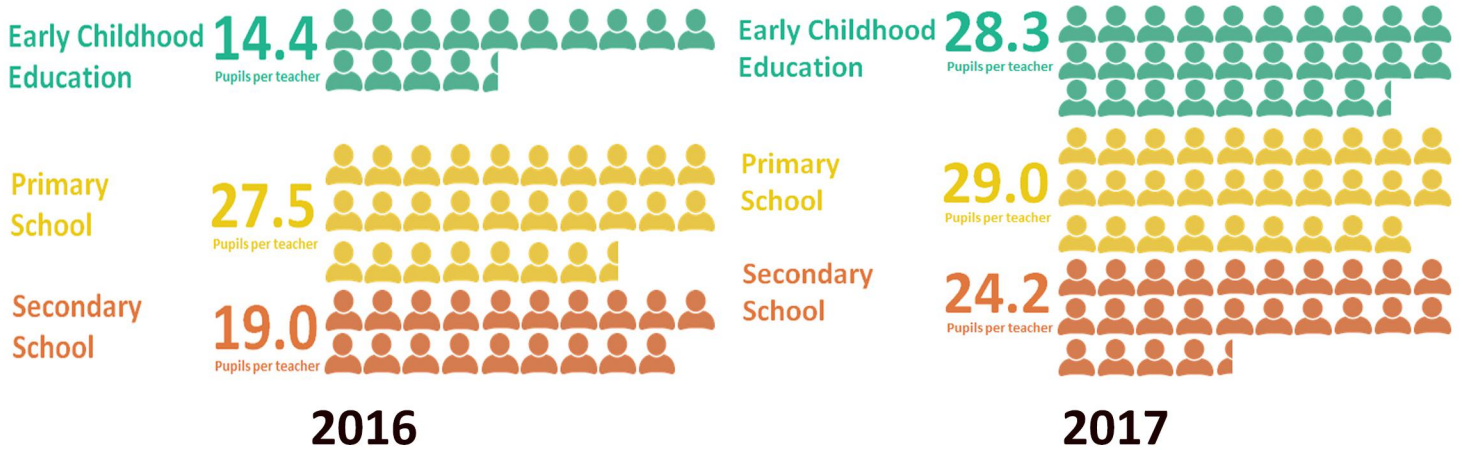
Enrolment of the official age group for a given level of education expressed as a percentage of the corresponding population.

## Gross Enrolment Rate per School Type



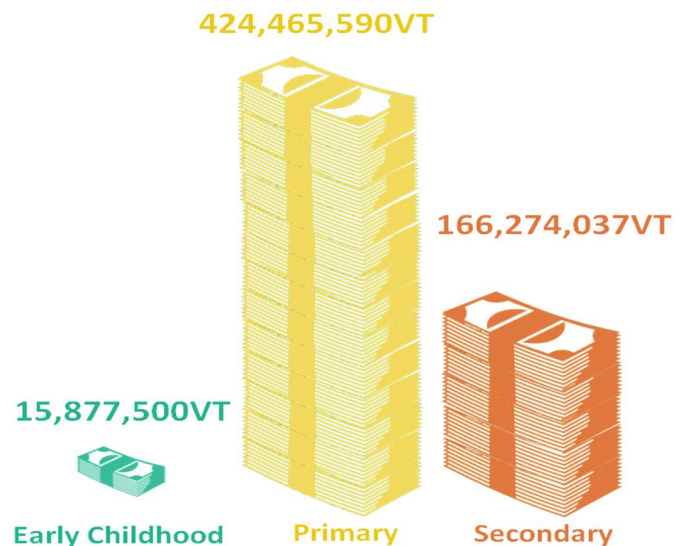
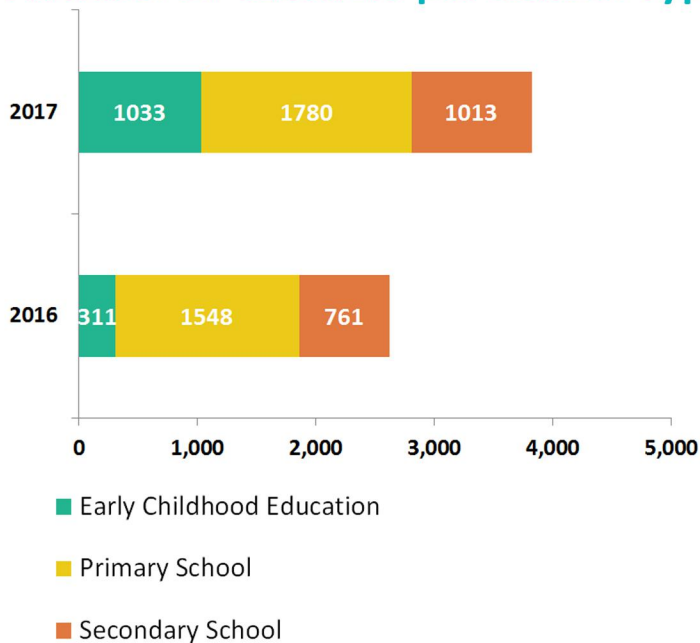
Total enrolment in a specific level of education, regardless of age, expressed as a percentage of the eligible official school-age population corresponding to the same level of education in a given school year.

# Student Teacher Ratio per School Type



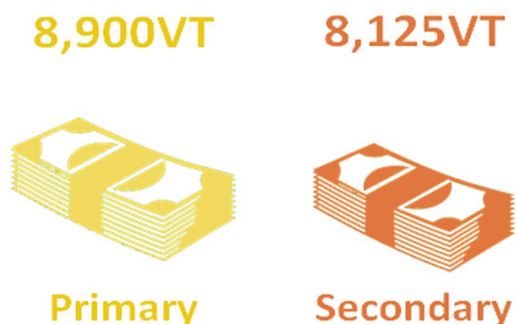
Ministry of Education and Training standard student teacher ratios are 1 to 15 in Early Childhood Education, 1 to 30 in Primary School and 1 to 25 in Secondary School.

## Number of Teachers per School Type Grant Allocations in 2017



94% of the contributions are from the Government of Vanuatu and 6% of the contributions are provided by the donor partners.

## Annual Grant in 2017 per student



## Partial Tuition Fee Term 3 in 2017 per student

